

# NO TRACKING



LIQUID DE-ICER





# LIQUID DE-ICER

## HISTORY

*Potassium Acetate made an early appearance in Europe as a deicer for airport runways. Potassium Acetate was an ideal fit for the runoff issues the Europeans were facing in densely populated areas. Utilizing their network of maintenance distributors, Ossian, Inc. introduced SELECT® LIQUID ICE MELTER over ten years ago. This environmentally friendly ice melter found a collective of different uses solving sticky maintenance problems, such as heli-copter pads at hospitals.*



*The most practical and potentially targeted use for SELECT® LIQUID ICE MELTER was discovered by our customers. SELECT® LIQUID ICE MELTER solved the tracking issue of ice melters. If any ice melter melts, it has the potential of being tracked into the building. Our customers experimented on their own and reported back to Ossian, Inc. the success they were having solving ice melt tracking issues by applying SELECT® LIQUID ICE MELTER 10 - 20 feet in their front entrance areas. Ossian, Inc. initiated a two year study at Des Moines Osteopathic University, confirming the value of SELECT® LIQUID ICE MELTER.*



## 2 YEAR STUDY

In a joint effort, Marsden Bldg Maintenance L.L.C. and the Des Moines Osteopathic University teamed up to find a way to save on maintenance costs and eliminate tracking problems they were having with excess usage of their pellet ice melter. Jeff Meyer at Marsden states:

**“For the two years they used SELECT® LIQUID ICE MELTER 10 to 20 feet in front of heavy traffic door entryways, complaints with regards to appearance, carpet mats and tracking were virtually non-existent.”**

Jeff further states “prior to using SELECT® LIQUID ICE MELTER, we had complaints everyday. By midway through the winter the walk off mats were so saturated with residue that we couldn't even extract them anymore to get it out, we had to bring them in our shop, use a pressure washer in order to remove the residue, then again it would only continue to build up. We saw tracking as far as 40 to 50 feet into the building.”

## MAINTENANCE

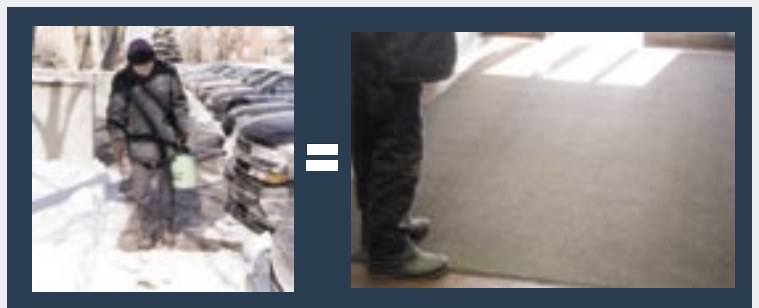
When maintenance managers think about the cost of an ice melter, they sometimes don't calculate the true costs. Such as the costs of extra cleaning at entry ways, the damage to plantings, corrosion of metal surfaces and costs of required overtime for cleanup. Which is too bad, because they could be spending way too much. **SELECT® LIQUID ICE MELTER** is clear, clean and it doesn't create additional housekeeping problems. It's biodegradable, has low toxicity, low corrosion and is effective at -15° F. Also, it can be applied up to 12 hours before precipitation to keep snow and ice from sticking, making it easier to remove by mechanical means.

Jeff Meyer at Marsden



When asked how beneficial **SELECT® LIQUID ICE MELTER** is, Jeff explains, “when you have a heavy snow the night before and maintenance applies ice melter early in the morning, there will be ice melt residue throughout your building by 10:00 am. You are then faced with a lousy appearance throughout the day. Our clean up crews then spend the whole night cleaning up the mess. Then the process would repeat itself the next morning. Throughout the winter the building looks poorly. The use of **SELECT® LIQUID ICE MELTER** 10 to 20 feet in front of the building entryways can eliminate a lot of the problem.”

**“It becomes a win-win situation, in safety to the walking public and building appearance can be maintained throughout the day.”**



**SAFE AND EASY TO USE**

**CUTS MAINTENANCE COSTS**

**ELIMINATES TRACKING**

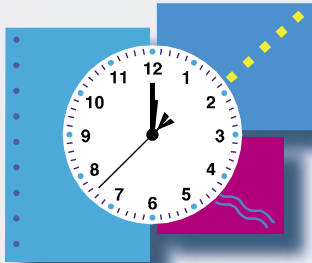
**ENVIRONMENTALLY FRIENDLY**

**USE AS A PRE-SPRAY**

**WORKS AT LOW TEMPERATURES**

### COST VS TIME

When asked about the cost of the liquid vs the dry material, it is very clear, while the cost of the liquid ice melter might be higher than dry material, the savings in clean up time alone more than offsets the additional cost.



**The extra hour spent outside with *SELECT*® LIQUID ICE MELTER can save ten hours of maintenance clean up inside.**

### GENERAL DESCRIPTION & APPLICATION

#### ❄️ General Description:

*SELECT*® LIQUID ICE MELTER is a high performance potassium acetate based liquid, intended for removal of snow and ice in commercial building applications. *SELECT*® LIQUID ICE MELTER is effective below -15° F and is fast acting and long lasting. At the same time, *SELECT*® LIQUID ICE MELTER is environmentally friendly, biodegradable and will not, in recommended application, effect plant life. The product has low toxicity and zero flammability.

***SELECT*® LIQUID ICE MELTER may be used as a pretreatment to prevent snow or ice from bonding or as a post application on packed snow.**

#### ❄️ Application:

*SELECT*® LIQUID ICE MELTER is intended to be used directly from the container, without dilution. It should be applied from a good quality commercial sprayer, made of polyethylene, stainless steel or lacquer lined steel. In general, the higher the surface temperature and/or the thinner the ice, the less *SELECT*® LIQUID ICE MELTER is needed. The following chart is the recommended gallons per 1000 square feet needed to efficiently de-ice and anti-ice.

### NOW AVAILABLE



### ENVIRONMENTAL IMPACT



In moderately cold or warm conditions, the components in *SELECT*® LIQUID ICE MELTER will biodegrade 50 to 80 percent within five days. Complete biodegradation will occur within weeks. Toxicity studies dealing with potassium acetate based de-icers have shown that it has very low mammalian acute oral toxicity and is expected to cause only slight eye irritation. Within generally accepted toxicity scales, *SELECT*® LIQUID ICE MELTER is categorized as “relatively harmless.” This product is also not expected to be toxic to aquatic organisms in limited quantities.

		Air Temperature (°F)									
		32°			20°			10°			
Snow or Ice Depth (inches)	3	3.7					4.6				9.1
		1.8					2.7				6
	2	1.2					1.8				3
		.9					1.2				1.8
	1/2	.9					1.2				1.8
		.5					.5				.5
	Glare Ice	.33					.33				.33
	<b>Gallons per 1000 Square Feet</b>										



## USE SELECT® LIQUID ICE MELTER:

Around helipads and other areas where flying debris is especially hazardous.

On diagonal or vertical surfaces.

Near planting or aquatic life that would be damaged by ordinary ice melters.

On metal roofs, gutters and flashings

Around mechanical trash handling systems

Around entrance ways to reduce tracking and maintenance costs.

On areas before a storm, to prevent snow from sticking.

Near moving equipment like escalators, elevators and automatic doors.

### PRODUCT SPECIFICATIONS

#### COMPOSITION

50% MINIMUM POTASSIUM ACETATE PLUS CORROSION INHIBITOR, BY WEIGHT

#### APPEARANCE

CLEAR, COLORLESS MOBILE LIQUID, FREE FROM VISIBLE PARTICULATE MATTER

#### FLASH POINT

NONFLAMMABLE

#### FREEZING POINT

LESS THAN -58°F (-50°C)

#### MISCIBILITY WITH WATER

COMPLETE

#### STORAGE

SHOULD BE STORED AND HANDLED IN ITS ORIGINAL CONTAINER OR IN EQUIPMENT MADE OF POLYETHYLENE, STAINLESS STEEL, LACQUER LINED MILD STEEL, OR GLASS.

#### AVAILABLE IN:

2x2.5 GAL JUG/CASE

5 GAL DENSE PAK

55 GAL DRUM



Manufactured  
and Marketed by

**ROSSIAN INC**  
Ice Melters That Work.®

Davenport, Iowa